



B-fix
& One
B-fix

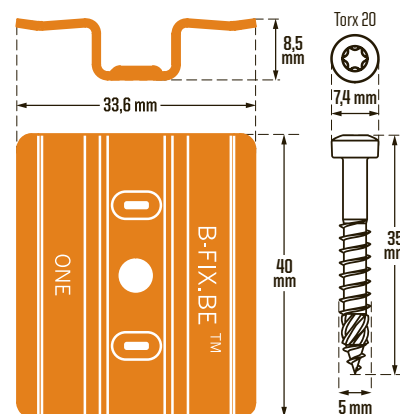
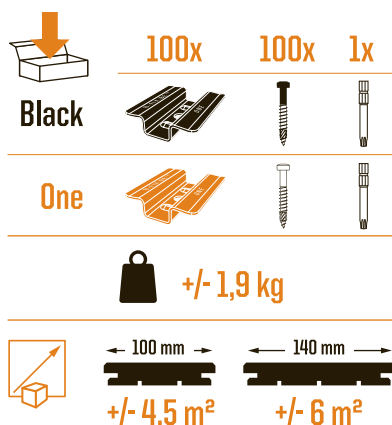
Black-One

Manufactured in Stainless Steel,
this system ensures **optimal
attachment**. Because of its simplicity,
it saves valuable time when installing.
Placed on millions of m² and tested on many
natural and synthetic boards,
it is the ideal partner
for your decks
and cladding.



Characteristics

-  **high finish level,
invisible**
-  **quick and easy
installation:
40% time savings**
-  **respects wood
movement: «spring
effect»**
-  **local disassembly
possible**
-  **usable with
3 different profiles**
-  **installation on
decks and siding**
-  **reinforced stainless
steel self-drilling
screws**
-  **specialist approved**
-  **patented system**
-  **made in Belgium**



Profiles

3 compatible profiles



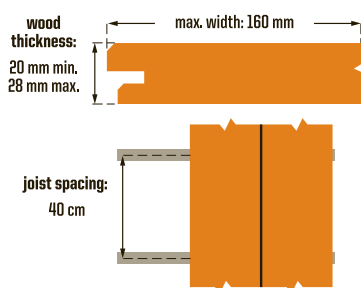
B-Fix **Classic**

B-Fix **Plus**

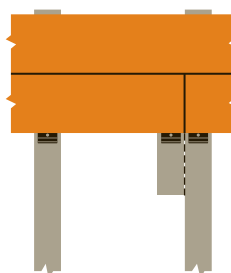
B-Fix **Premium**



Recommended material

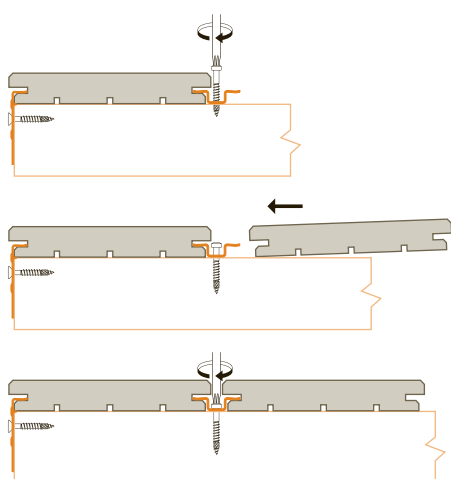


Butting

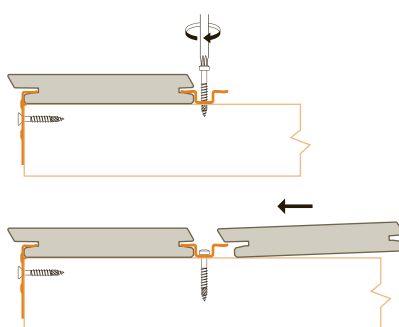


Assembly

B-Fix **Classic**



B-Fix **Plus / Premium**



Materials



B-Fix **One**: 301 Stainless Steel

B-Vis: A2 stainless steel + silver coating

B-Fix **Black-One**: 301 stainless steel

+ black coating

B-Vis **Black**: A2 stainless steel

+ black coating

Tested wood



Ipe, Padouck, Afrormosia, Cumaru, Itauba, Tali, Limbali, Larch, Douglas, Bamboo, Teak, Jatoba, Merbau, Garapa, Massaranduba, thermo wood, composite, Accoya wood, ...

Installation conditions

Humidity target



	Le Zoute	Brussels	Lille	Marseille
☀	22	22	22	17
❄	+ 18	+ 16	+ 14	+ 11
	<u>2</u>	<u>2</u>	<u>2</u>	<u>2</u>
	= 20%	= 19%	= 18%	= 14%

Distributed by:



+32 10 400 790
+33 1 747 13 834
+32 10 400 795
+33 1 747 13 835

info@b-fix.be
Drève des 4 Chênes, 1
1495 Villers-la-Ville
Belgium
www.b-fix.be

